

Metal tree

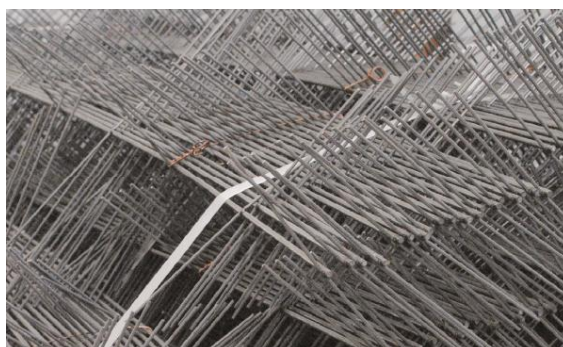
This **metal protector** allows an interesting defense against the phenomenon of smear caused by deer, blocking the movement of their antlers.



Quick and easy installation thanks to an easy grip and a minimal footprint.

The metal tree is composed of an iron metal main axis on which are welded to the horizontal rods of lower diameter. These rods, measuring approximately twenty centimeters, are positioned at 90 ° to the others in order to have a stronger action.

Before pressing this protector in the soil, the bottom rod should be folded to allow good stability.





The professional protection for plantations

Technical data:

- Main axis:
 - 3.8 mm diameter
 - 1.15m height
- Perpendicular rods:
 - 2mm diameter
 - 20 cm length
- Bottom rod :
 - 2mm diameter
 - 37 cm length

It is recommended to use this protection in the case of plants only little browsed.

Once the plant is strong enough, the protector should be removed in order to facilitate further work on the plot.

